

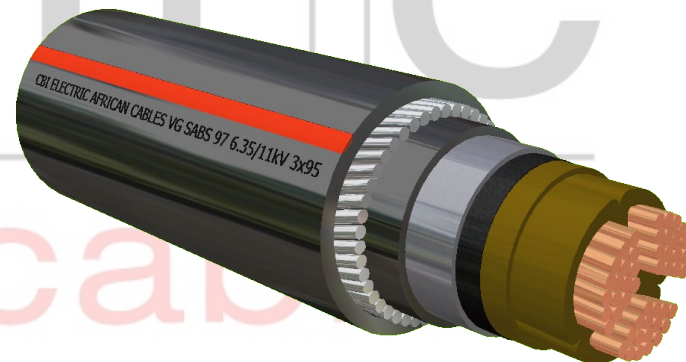
# Medium Voltage Paper Insulated Lead Alloy Covered Cables (PILAC)

PILAC F1FC... Primary group code  
FRPVC SWA FRPVC (red stripe) ...37 111 Table + Finish code  
LHPVC SWA LHPVC (blue stripe) ...37 212

Size code	...naaa...	3025	3035	3050	3070	3095	3120	3150	3185	3240	3300
Conductor size	mm <sup>2</sup> nom	25*	35*	50*	70	95	120	150	185	240	300
Conductor depth	mm app.	6,1	7,2	8,3	8,3	9,8	11,0	12,2	13,7	15,7	17,6
Insulated depth	mm app.	12,4	13,5	14,6	14,6	16,0	17,2	18,4	19,9	21,9	23,9
Diameter over lead sheath	mm app.	32,5	34,5	37,0	36,5	40,0	42,5	45,5	49,0	53,0	57,5
Bedding diameter	mm app.	35,0	37,5	40,5	39,5	43,0	46,0	49,0	52,5	56,5	61,5
Size of armour wires	mm	2,00	2,50	2,50	2,50	2,50	2,50	3,15	3,15	3,15	3,15
Overall diameter	mm app.	43,5	47,0	50,0	50,0	53,5	57,0	61,5	65,0	69,5	74,5
Normal drum length	m	500	500	300	300	300	300	300	300	300	300
Cable mass	kg/m app.	5,2	6,2	7,1	7,7	9,1	10,5	12,7	14,5	17,0	19,9
Gross mass (drum length)	kg app.	2820	3340	2460	2640	3130	3550	4210	5015	5600	6540
Bending radius	mm min.	522	564	600	600	642	684	738	780	834	894
<b>Current rating</b>											
In ground	Amps	110	130	155	190	230	260	295	335	385	435
In ducts	Amps	91	110	130	160	195	220	250	280	325	365
In air	Amps	110	130	160	200	245	280	320	370	430	495
<b>Positive sequence</b>											
Resistance dc @ 20°C	Ω/km max	0,727	0,524	0,387	0,268	0,193	0,153	0,124	0,0991	0,0754	0,0601
ac @ 70°C	Ω/km	0,870	0,627	0,463	0,321	0,232	0,184	0,149	0,1201	0,0924	0,0747
Reactance	Ω/km	0,110	0,105	0,101	0,082	0,077	0,075	0,073	0,070	0,068	0,066
Impedance	Ω/km	0,877	0,636	0,474	0,332	0,244	0,199	0,166	0,139	0,115	0,099
<b>Zero sequence</b>											
Resistance	Ω/km	2,491	1,927	1,673	1,525	1,321	1,181	0,934	0,842	0,759	0,680
Reactance	Ω/km	0,126	0,120	0,115	0,117	0,112	0,108	0,105	0,102	0,098	0,094
Impedance	Ω/km	2,494	1,931	1,677	1,529	1,326	1,186	0,940	0,848	0,765	0,686
<b>Short circuit ratings</b>											
Symmetrical	kA (1sec)	3,7	5,1	6,9	9,9	13,8	17,4	21,5	26,9	35,3	44,3
Earth fault(Symmetrical limit)	kA (1sec)	12,6	15,9	17,0	17,1	18,8	20,5	26,2	28,4	30,7	33,7

\* Circular Conductor

When ordering please quote: primary + size + table + finish code  
e.g. F1FC 3120 37 111 0K0S



Soil thermal resistance = 1,2Km/W  
Soil temperature = 25°C  
Depth of burial = 800mm  
Air temperature = 30°C  
+5% tolerance on dimensions

**POWER BY INNOVATION... INNOVATION THROUGH PARTNERSHIPS**